

CM-12 JET BARGE

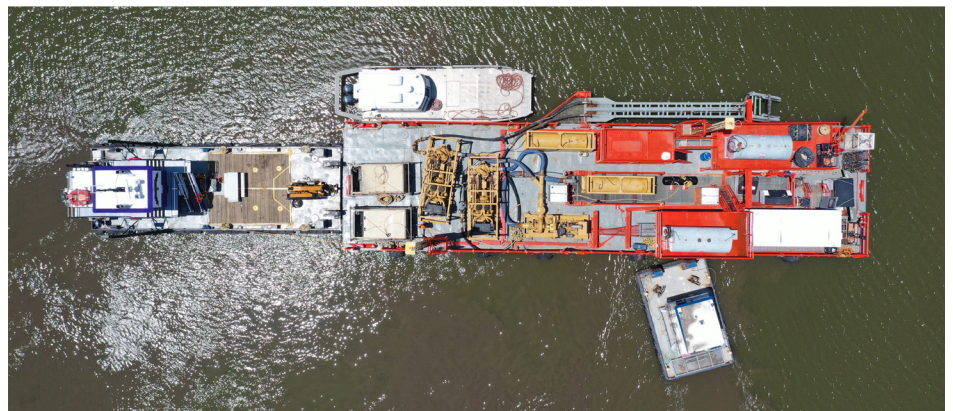


Capabilities

The CM-12 is an all-purpose jetting barge that can jet to 25 ft below the waterline.

Key Features

- Effectively service most inland areas due to its 4 ft shallow draft
- Spread can be utilized to support hand jetting
- Jet Claw can be mounted in centerline moon-pool or outboard of barge



Specifications

Length	120 ft
Width	30 ft
Hull depth	7 ft
Vessel draft	4 ft

Accommodations

(1) 8 ft x 20 ft office
Cool down room

Mooring Equipment

Spuds	(2) 40 ft long
Winch	Friction

Bury Equipment

Jet pumps	(2) 10 in x 10 in jet pump
Feeder pump	(1) 12 in x 12 in charge pump
Air compressor	(2) 900 cfm @ 125 psi
Jet claw	Adjustable width 2 in to 42 in diameter
Welding machine	(1) 400 amp Lincoln
Diesel	8,000 gal
Shallow water dive spread	



HOUSTON, TEXAS

16285 Park Ten Place, Suite 100
Houston, TX 77084
713.344.9233

CORPORATE MAILING ADDRESS

PO Box 3301
Houma, LA 70361